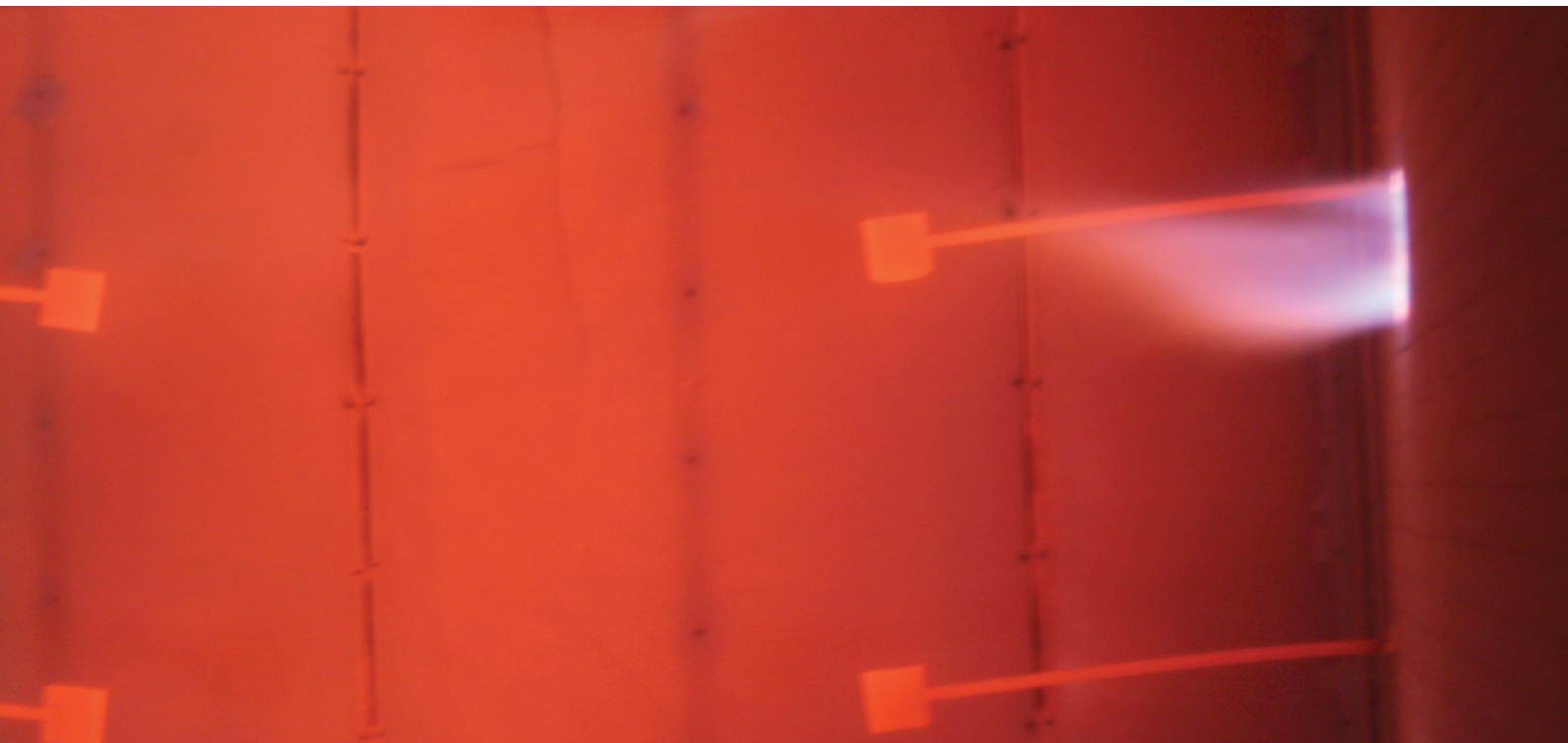


A1 Class Non-Combustible

coreX

KEMWELL PFP
Fire protection and insulation

A SHAFT WALL WITH UP TO **120 MINUTES** FIRE RESISTANCE AND MOISTURE RESISTANCE TOO?
NO PROBLEM!



Shaft wall fire rated solution with **A1 COREX**

- A1 COREX is a superior plasterboard used for fire resistance
- A1 COREX comes with non-combustible fibreglass mesh on both faces
- A1 COREX board is tested to meet EN-13501-1 for non-combustibility
- A1 COREX board is certified to ETA, GREENGUARD and EPD
- Simple and quick to install, saving time and money
- Can be installed prior to building being weathertight



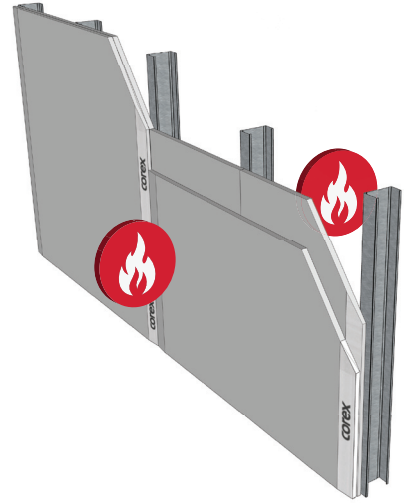
**60
MINUTES**

■ **2x15 mm**
■ **A1 COREX - EI 60**

A double layer of 15 mm **A1 COREX** provides 60 minutes (EI60) fire resistance from both sides (according to Efectis classification report).

System Components:

- 2 layers of 15 mm **A1 COREX**
- DU 75 track (38x75x38 mm ; 0.5 mm thick)
- DC 75 stud (47x74x47 mm; 0.6 mm thick)
- Studs at 600 mm centres
- No mineral wool required
- Joints taped and filled as normal on outer layer



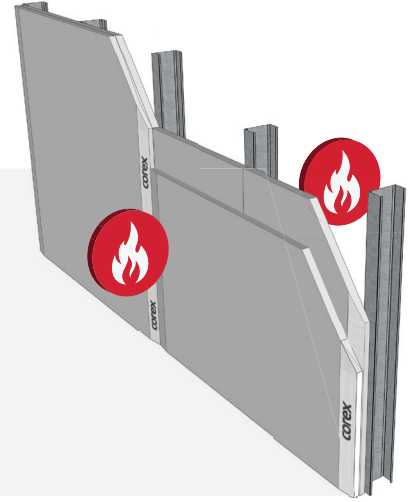
**90
MINUTES**

■ **2x20 mm**
■ **A1 COREX - EI 90**

A double layer of 20 mm **A1 COREX** provides 90 minutes (EI90) fire resistance from both sides (according to Efectis classification report).

System Components:

- 2 layers of 20 mm **A1 COREX**
- DU 75 track (38x75x38 mm ; 0.5 mm thick)
- DC 75 stud (47x74x47 mm; 0.6 mm thick)
- Studs at 600 mm centres
- No mineral wool required
- Joints taped and filled as normal on outer layer



**120
MINUTES**

■ **2x25 mm**
■ **A1 COREX - EI 120**

A double layer of 25 mm **A1 COREX** provides 120 minutes (EI120) fire resistance from both side (according to Efectis classification report).

System Components:

- 2 layers of 25 mm **A1 COREX**
- DU 75 track (38x75x38 mm ; 0.5 mm thick)
- DC 75 stud (47x74x47 mm; 0.6 mm thick)
- Studs at 600 mm centres
- No mineral wool required
- Joints taped and filled as normal on outer layer

